

# Switch Replacement Instructions

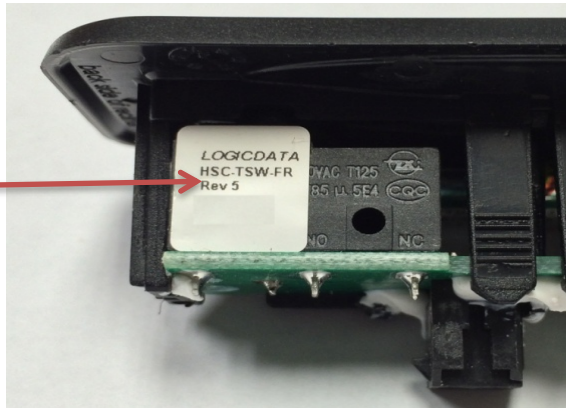
- 1 Unplug unit from wall outlet.



- 2 Open switch supply pack and remove new switch(s). Save package for return.



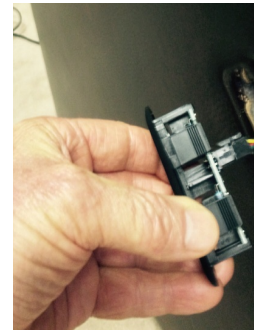
- 3 Please verify on the silver sticker that your new replacement switch is a REV 5. The silver sticker is located on the side of the switch assembly. If it is a Rev 5 please proceed with step 4.



Side mount

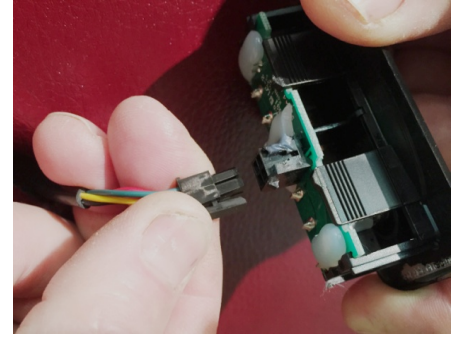
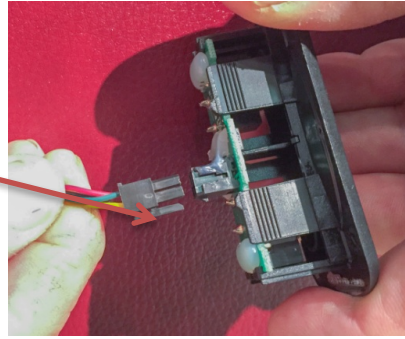
Console mount

- 4 Use flat head screwdriver to lift up both sides of switch bezel to unsnap switch. Once unsnapped, pull switch out with fingers.



- 5 Disconnect switch by squeezing lever lock clip and pulling plugs apart. Once disconnected, keep box plug wire outside of furniture to reconnect new switch.

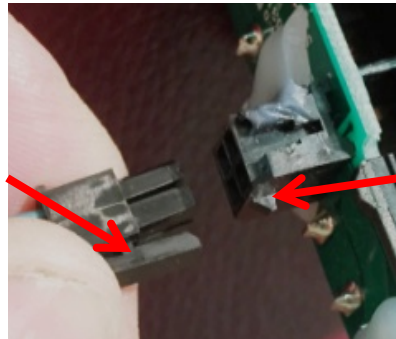
Lever Lock Clip



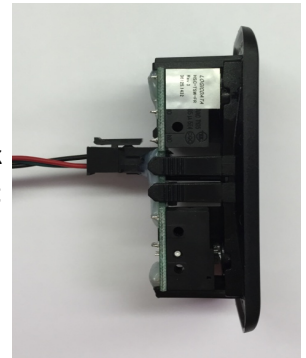
- 6 Place old switch in returnable package.

- 7 Align Lever Lock clip with lock post. Firmly press together until it snaps.

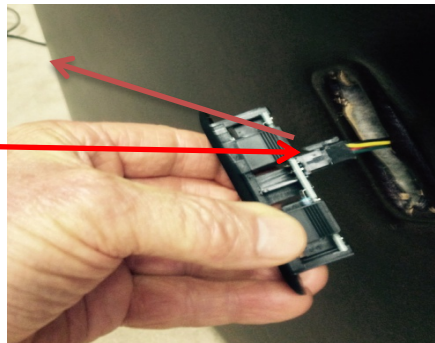
Lever Lock Clip



Lock Post



- 8 position Lever Lock clip on switch towards back of furniture for switch snap in alignment.



- 9 Press the new switch assembly back into your reclining furniture until it snaps firmly in place. Note: Do not force if it will not freely snap in place revert back to step 8.



- 10 Plug unit back in to wall outlet.



Allow a few seconds for the systems to reset before operating.

You can now operate you reclining furniture.

Note: Please place old switch(s) into "pre-paid self address" envelope, seal and return.